

4

3

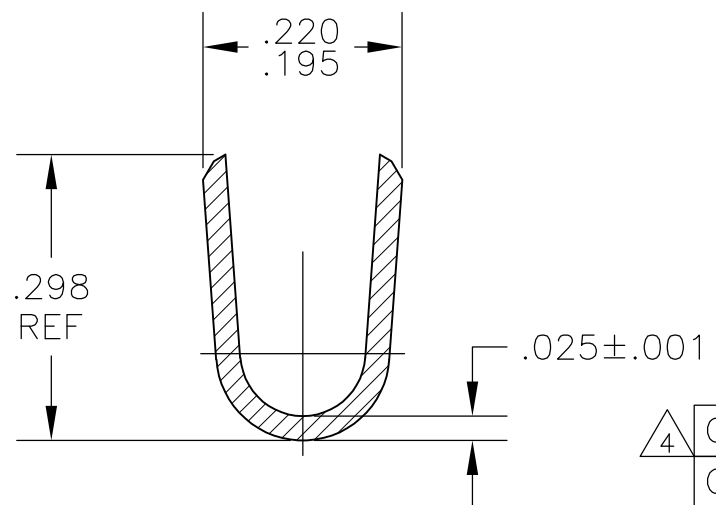
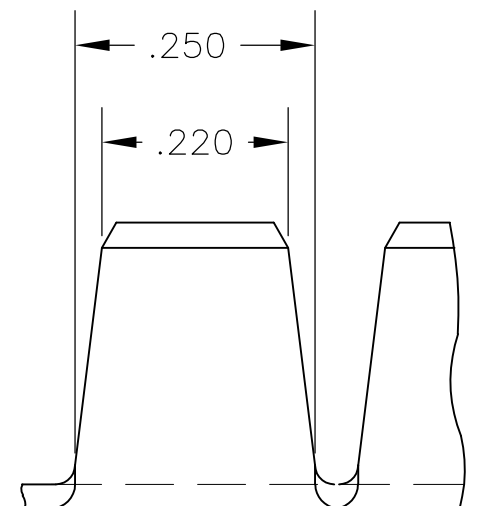
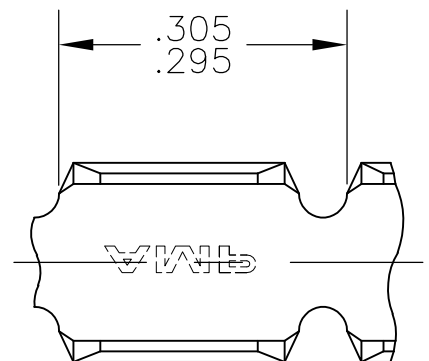
2

1

THIS DRAWING IS UNPUBLISHED. RELEASED FOR PUBLICATION

© COPYRIGHT BY TYCO ELECTRONICS CORPORATION. ALL RIGHTS RESERVED.

LOC	DIST	REVISIONS					
		P	LTR	DESCRIPTION	DATE	DWN	APVD
AF	50		P1	ECR-07-001426(REDRAWN IN AUTOCAD)	13DEC06	HMR	GP
			P2	REVISED PER ECO-09-021826	07SEP09	KK	AEG



- 1 CONTINUOUS STRIP ON REELS.
- 2 WIRE RANGE: 12,000 TO 18,000 CMA
- △3 FOREIGN PRODUCTION ONLY.
- △4 OBSOLETE PARTS: OBSOLETE CIS STREAMLINING PER D.RENAUD/D.SINISI

△4	OBSOLETE	NONE	TEMPER A ST. STEEL	60997-5
	OBSOLETE	.000080 MIN TIN	TEMPER 3 C.R. STEEL	60997-4
△4	OBSOLETE	.000150 MIN NICKEL	TEMPER 3 C.R. STEEL	60997-3
△3	OBSOLETE	.000080 MIN TIN	082 BRASS	60997-2
		NONE	082 BRASS	60997-1
		FINISH	MATERIAL	PART NO

THIS DRAWING IS A CONTROLLED DOCUMENT.		DWN RAGHAVENDRA 13DEC06	Tyco Electronics Corporation Harrisburg, Pa 17105-3608														
DIMENSIONS: INCHES		CHK G.D.PORTA 04JAN07	NAME														
TOLERANCES UNLESS OTHERWISE SPECIFIED:		APVD G.D.PORTA 04JAN07	PRODUCT SPEC														
<table border="0"> <tr><td>0 PLC</td><td>± -</td></tr> <tr><td>1 PLC</td><td>± -</td></tr> <tr><td>2 PLC</td><td>± -</td></tr> <tr><td>3 PLC</td><td>± .010</td></tr> <tr><td>4 PLC</td><td>± -</td></tr> <tr><td>ANGLES</td><td>± -</td></tr> </table>		0 PLC	± -	1 PLC	± -	2 PLC	± -	3 PLC	± .010	4 PLC	± -	ANGLES	± -	APPLICATION SPEC		SIZE	RESTRICTED TO
0 PLC	± -																
1 PLC	± -																
2 PLC	± -																
3 PLC	± .010																
4 PLC	± -																
ANGLES	± -																
MATERIAL SEE TABLE	FINISH SEE TABLE	WEIGHT -	A3	CAGE CODE 00779	DRAWING NO G-60997												
CUSTOMER DRAWING			SCALE 5:1	SHEET 1 OF 1	REV P2												